

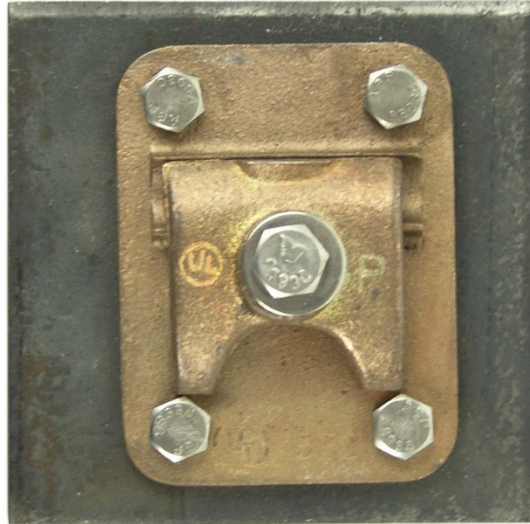


KLP, INC.
LIGHTNING PROTECTION SYSTEMS
PROTECTING LIVES AND PROPERTY
406-745-3800, PH 406-745-3820, FAX

www.kuefler-lightning.com
kuefler@kuefler-lightning.com

P.O. BOX 209
ST. IGNATIUS, MT
59865

485 – WELD BOND PLATE



0.25" x 4" x4" mild steel weld plate, also available with no bond plate for use with air terminal bases or any other bond.

ALUMINUM	BRONZE	TINNED BRONZE
Part Number	Part Number	Part Number
A485	C485	C485T